



**Neer Vision 4.0**

10



# Neer Vision 4.0

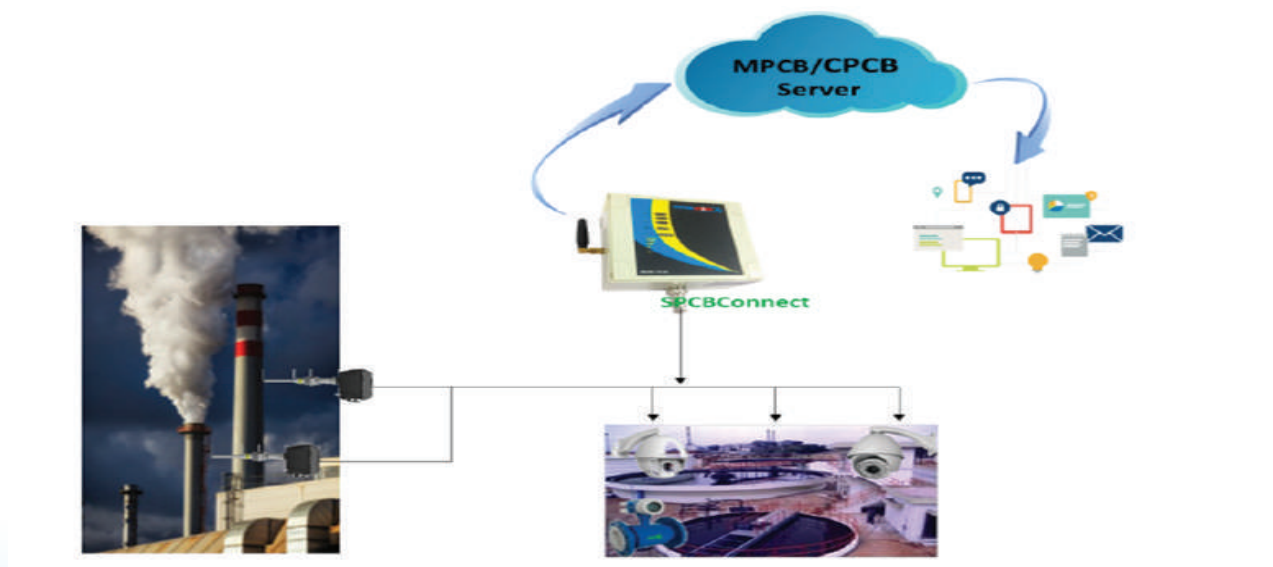
Neer Vision by Green Care Engineering is our new offering in the field of smart water management solutions.

We use the latest IOT(internet of things) for smart water management which mainly focuses on:

- Accurate and speedy measurement of quality of raw catchment water.
- Tracking and Understanding the chemical composition of pre and post-treated water.
- Measure the quantity in the storage reservoirs and other apparatus.
- Track the pressure readings,reduce water wastage improve cost savings.

**NeerVision SPCB Connect provides online data connectivity of any equipment like Smartphone, Tablet, Laptop, Desktop, etc., to the SPCB/CPCB cloud server (CEMS). The equipment can be of any make and model (Existing/New) and could be any of the followings:**

- Stack Monitoring Sensors/Analyzers for Dust, TPM, Stack Flow, SoX/NoX etc.
- Effluent Monitoring Sensors/Analyzers for COD, BOD, TSS, pH, Cl, Cr & Flow etc.
- Monitoring & Reporting for ZLD Plants with Camera System and Effluent Flow.
- Air Quality Monitoring System.



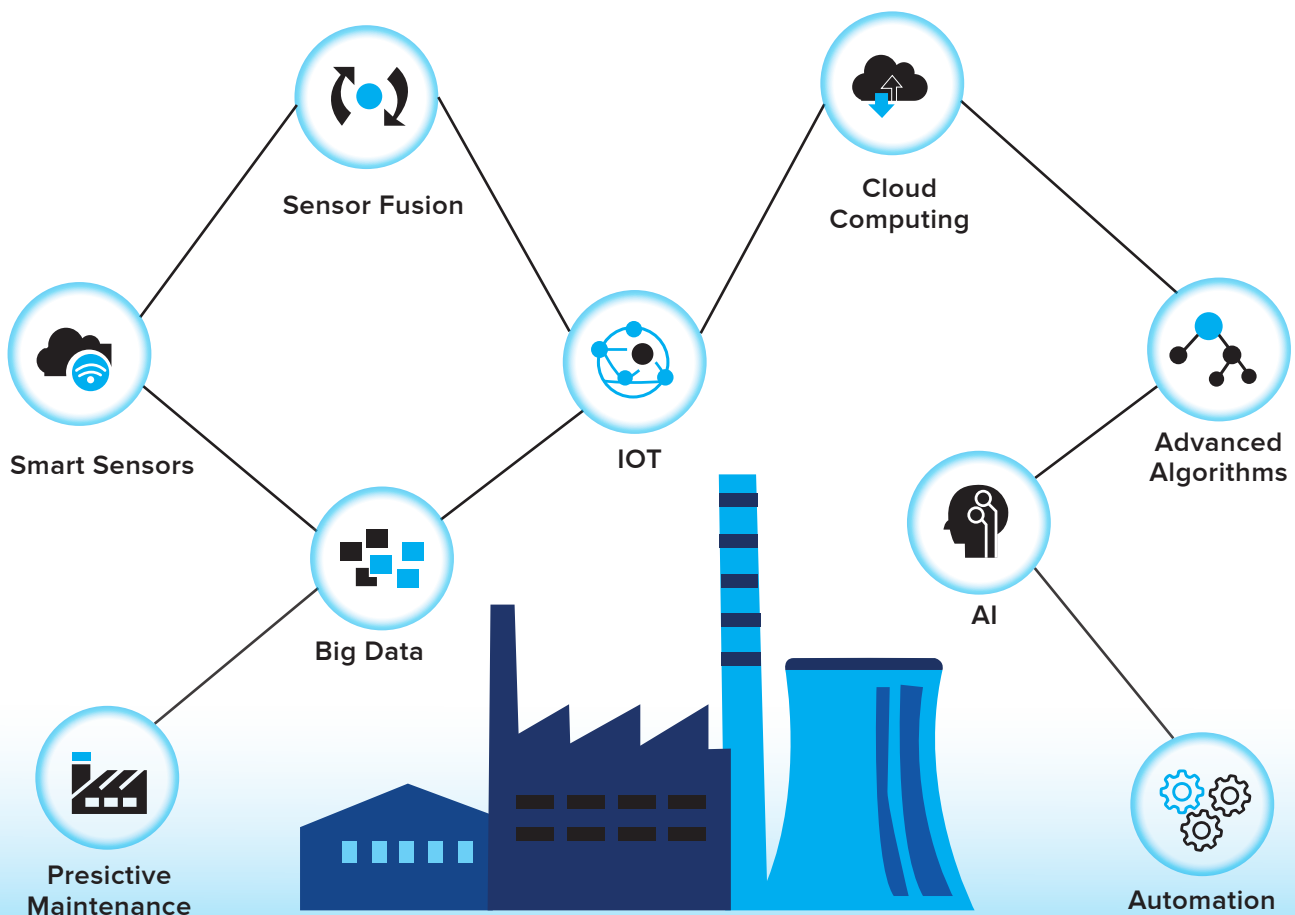
# Who We Are ?

Green Care Engineering India Pvt Ltd is an organization which is committed to deliver very high professional efficiency in delivery and management of Waste water Treatment Systems and Energy Reusable Sources. Our goal is to share our expertise in providing solutions for wastewater treatment in various industries with special focus on sectors like Renewable Energy, Industry & Agriculture, Food & Beverages, Pharmaceuticals, Textile, Steel Manufacturing, Hotels, Municipalities, etc

## Smart Water Management – Industry 4.0

GCE is entering a digital Era of Industry 4.0 - Industrial Internet of Things for building a Smart Water Management Plant.

All solutions leverage IoT gateways to stream field data to cloud services. The integrated cloud-enabled services such as remote management, big data analytics, machine learning, and business intelligence can provide benefits such as remote monitoring to enable exceptional management and advanced process control.





## Salient Features

---

**Virtual Control:** Remote monitoring and management of operations. Direct access to the data from any location to smartphones, tabs or desktop devices. Access can be managed for multiple users.

**Data Collection:** Comprehensive data acquisition systems including flow rate, energy consumption, water quality, sub-metering and environmental sensor data.

**Alert Mechanism:** Real-time notifications and alerts if system process is out of normal range. Helps in addressing the issue quicker; thus saving time, resource and cost escalation.

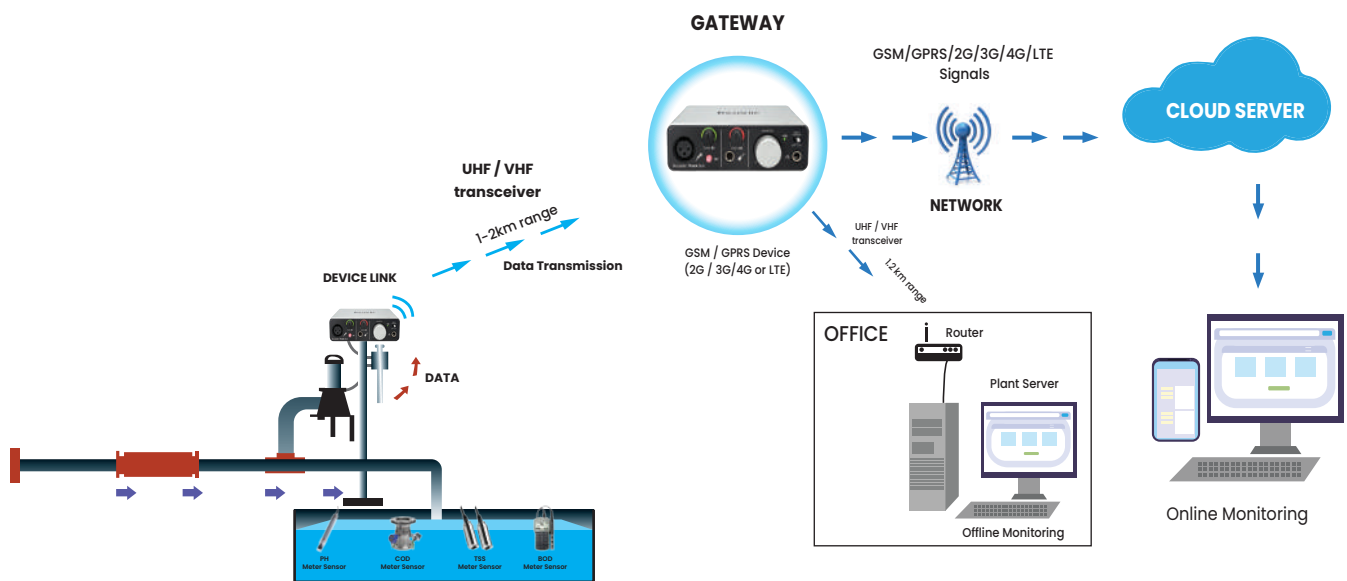
**Scalable Platform:** Customizable application as per the scale of operations. Smart modifications to sensors and computational resources without affecting the performance and reliability.

**Reporting:** Generate and manage reports with qualitative and quantitative analytics data. It helps with better understanding of the operations and assists in mitigating risks, proactively fixing defects and improving efficiency.

# IoT Solution: Cloud-enabled Monitoring for Water and Wastewater Management

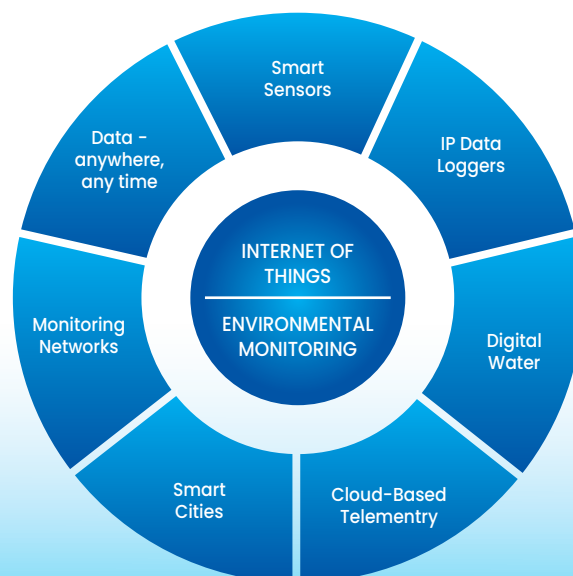
Equipment that integrates the monitoring, control, data analysis, real-time video, mass data records, database exchange mechanism and cloud technology-based system, allows water conservation experts to easily construct various modes of control and management analysis.

From the water source to sewage treatment, reclaimed water and drinking water, Greencare provides system devices, intelligent terminals, redundancy controllers, various communication devices and cloud monitoring software

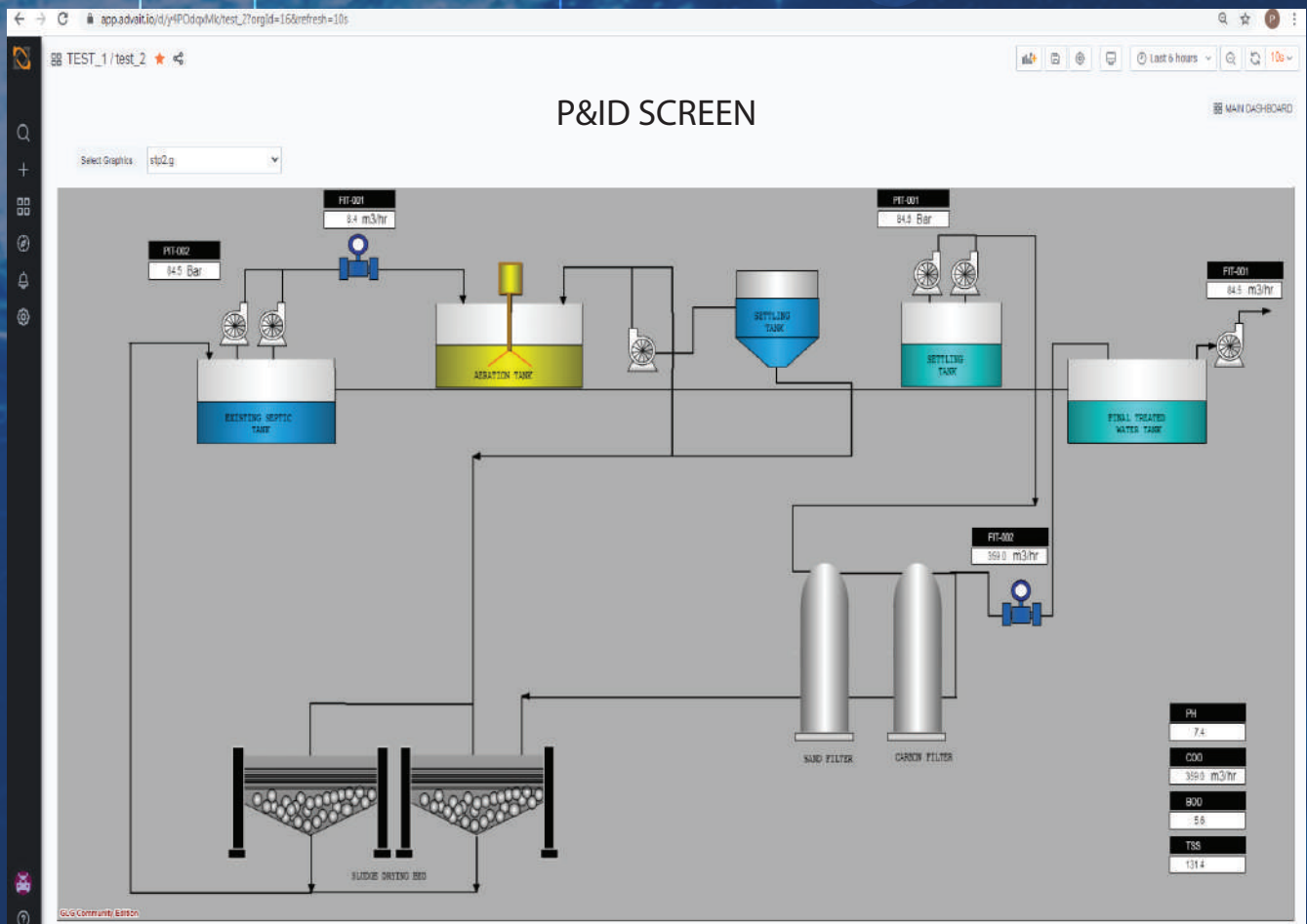


## IOT:

- Predictive maintenance methodologies
- Pump station management solution
- Sewage / reclaimed water treatment solution



# Neer Vision Dashboard





**NEER VISION**

## Get in Touch

---

Green Care Engineering India Private Limited  
No. 3, Maniam Mango Grove, 10th Cross Street,  
Wood Creek County, Nandambakkam, Chennai 600016

 +91 9944527996

